

3010 Grand Ave, Waukegan, IL 60085 | [health.lakecountyil.gov](http://health.lakecountyil.gov) | (847) 377-8000

## What is Influenza?

Influenza is a virus which primarily causes a respiratory illness (flu), which can then be spread to others by tiny air droplets when people talk, cough, or sneeze. Symptoms include cough, sore throat, runny nose, fever, headaches, and body aches. Older people, young children, and people with certain chronic conditions or weakened immune systems, are at high risk for severe flu complications that may lead to hospitalization, or even death. **The best way to prevent the flu or lessen its symptoms is to get the flu vaccine. All individuals 6 months and older should be vaccinated annually.**

This report summarizes the weekly flu activity in Lake County, Illinois. The typical Influenza “flu” season runs from early October (estimated week 40) through the end of March (week 13) but may run longer. Please note all data are preliminary and are subject to change.

## Weekly Summary

The following data was obtained from the Illinois National Electronic Disease Surveillance System (I-NEDSS).

Geographic Area	Influenza-related intensive care unit admissions		Influenza-related pediatric deaths (0–18 years)		Influenza/Influenza-like illness <sup>a</sup> cluster or outbreaks in Congregate settings <sup>b</sup>	
	Week – No. of Cases	Season Total	Week – No. of Cases	Season Total	Week – No. of Cases	Season Total
Lake County	Wk 10 – 7	45	Wk 10 – 0	1	Wk 10 – 0	11 <sup>c</sup>
Illinois <sup>d</sup>	Wk 09 – 103	1,200	Wk 09 – 1	7	Wk 09 – 10	136

<sup>a</sup> Influenza-like illness (ILI) is defined as fever (temperature  $\geq 100^{\circ}\text{F}$  [ $37.8^{\circ}\text{C}$ ]) and cough and/or sore throat without a known cause other than influenza.

<sup>b</sup> Congregate settings are defined as long term care facilities, group homes, hospitals, and correctional facilities.

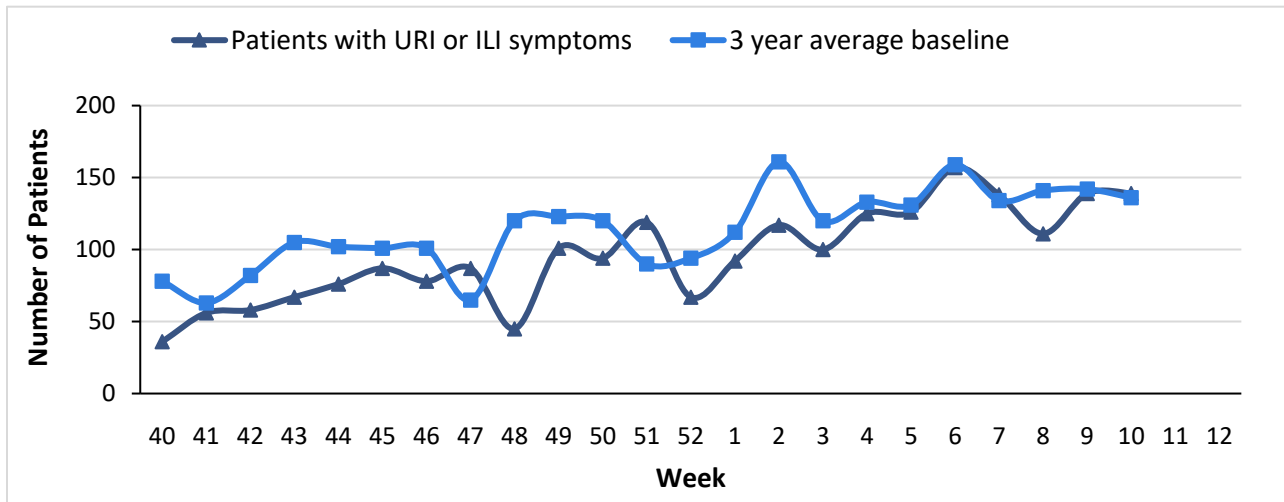
<sup>c</sup> One outbreak was reported on week 36 before the start of the influenza season (week 40). 2<sup>nd</sup> outbreak reported at Great Lakes

<sup>d</sup> Illinois Department of Public Health have a different reporting week.

## Lake County Health Department Virologic Surveillance

Lake County Health Department, Federally Qualified Health Centers (FQHCs) include 8 outpatient clinics. In 2018, the FQHCs had 76,247 healthcare provider visits. The total number of patients with upper respiratory tract infections (URI) or ILI was obtained from electronic health record for these sites.

**Figure 1. The number of patients diagnosed with upper respiratory tract infections (URI) or ILI, as reported by Lake County Health Department, Federally Qualified Health Centers, by week for the influenza season 2019–2020**

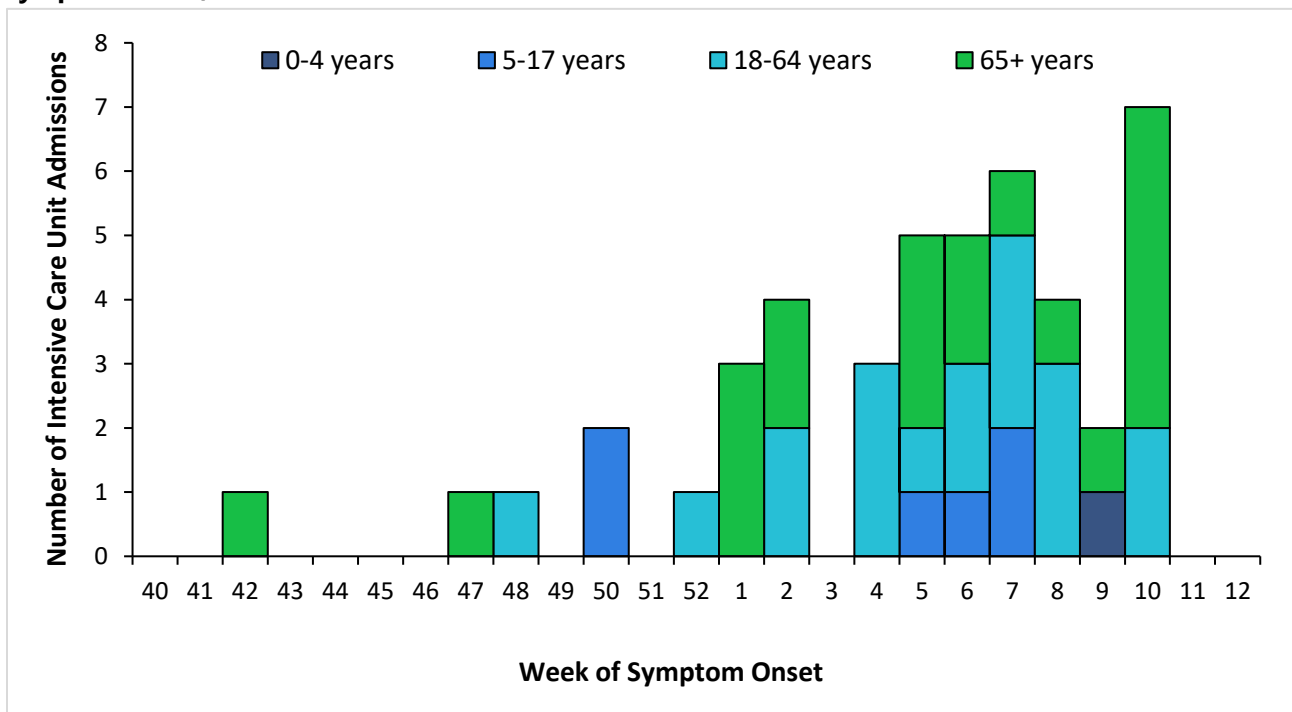


The 3-year average baseline is defined as the average number of patients with URI or ILI symptoms for weeks 40–52 for 2016, 2017 & 2018. **Starting week 1 onward, the 3-year average will be for 2017, 2018 and 2019.**

### Influenza-Associated Intensive Care Unit Hospitalizations in Lake County

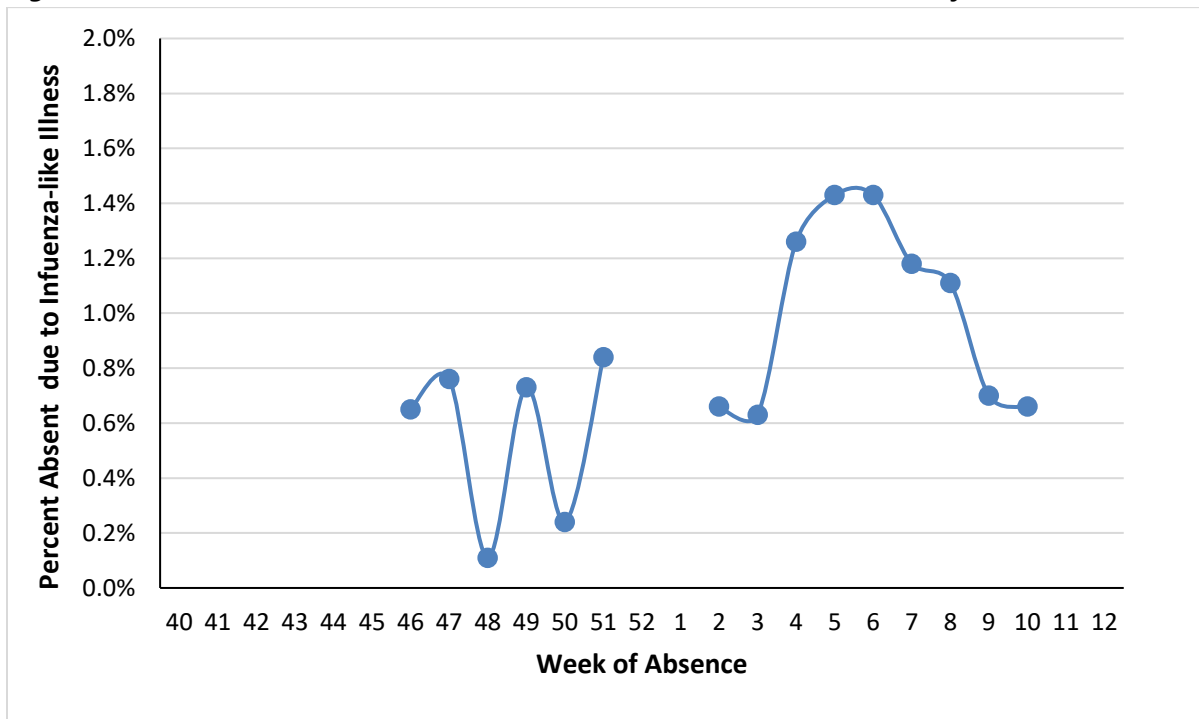
There were 7 influenza-associated intensive care unit admissions reported to LCHD/CHC during **week 10**. A total of 1 influenza-associated pediatric deaths have been reported for the 2019–2020 season.

**Figure 2. Number of influenza-associated intensive care unit admissions, by age group and week of symptom onset, 2019–2020**



## Absenteeism due to Influenza-like Illness in Lake County Schools

**Figure 3. Percent of school absences due to influenza-like illness, academic year 2019–2020**



**Weeks 40-45:** No data reported from Lake County schools participating in ILI surveillance.

**Week 46:** 1 school in school district #6 reported.

**Week 47-48:** 4 school districts reporting. Week 48 was the week of Thanksgiving.

**Weeks 49-51:** 6 school districts reporting.

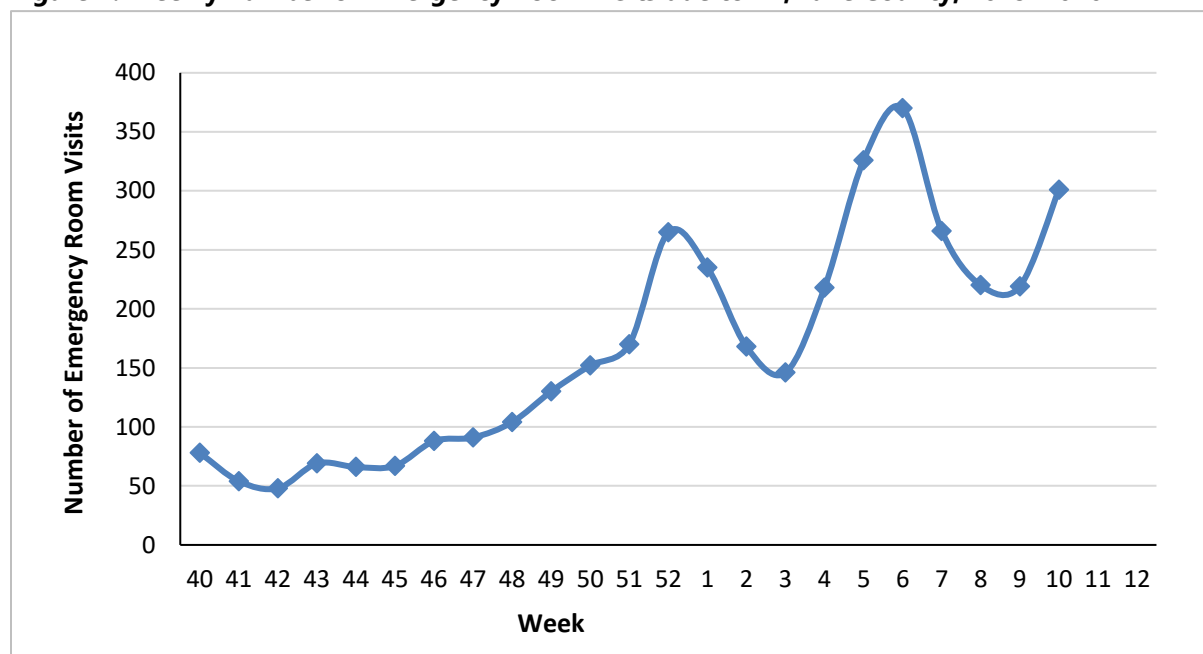
**Weeks 52-01:** No data reported due to Winter break

**Weeks 02-10:** 6-7 school districts reporting.

## Emergency Room visits in Lake County due to Influenza-like Illness

The Illinois Department of Public Health collects emergency department visits from all acute care hospitals in Illinois for syndromic surveillance (ESSENCE surveillance system). In this report, the visits are classified as ILI based on the chief complaints that include terms “influenza” or “fever and cough or sore throat” similar to the CDC ILINET definition while excluding terms unrelated to ILI. In **week 10**, we saw **301** emergency room visits for ILI in the seven Lake County Hospitals.

**Figure 4. Weekly number of Emergency Room visits due to ILI, Lake County, 2019–2020**



For questions regarding influenza and reportable diseases, please contact Communicable Disease (CD program) at (847) 377-8130.