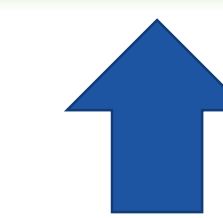
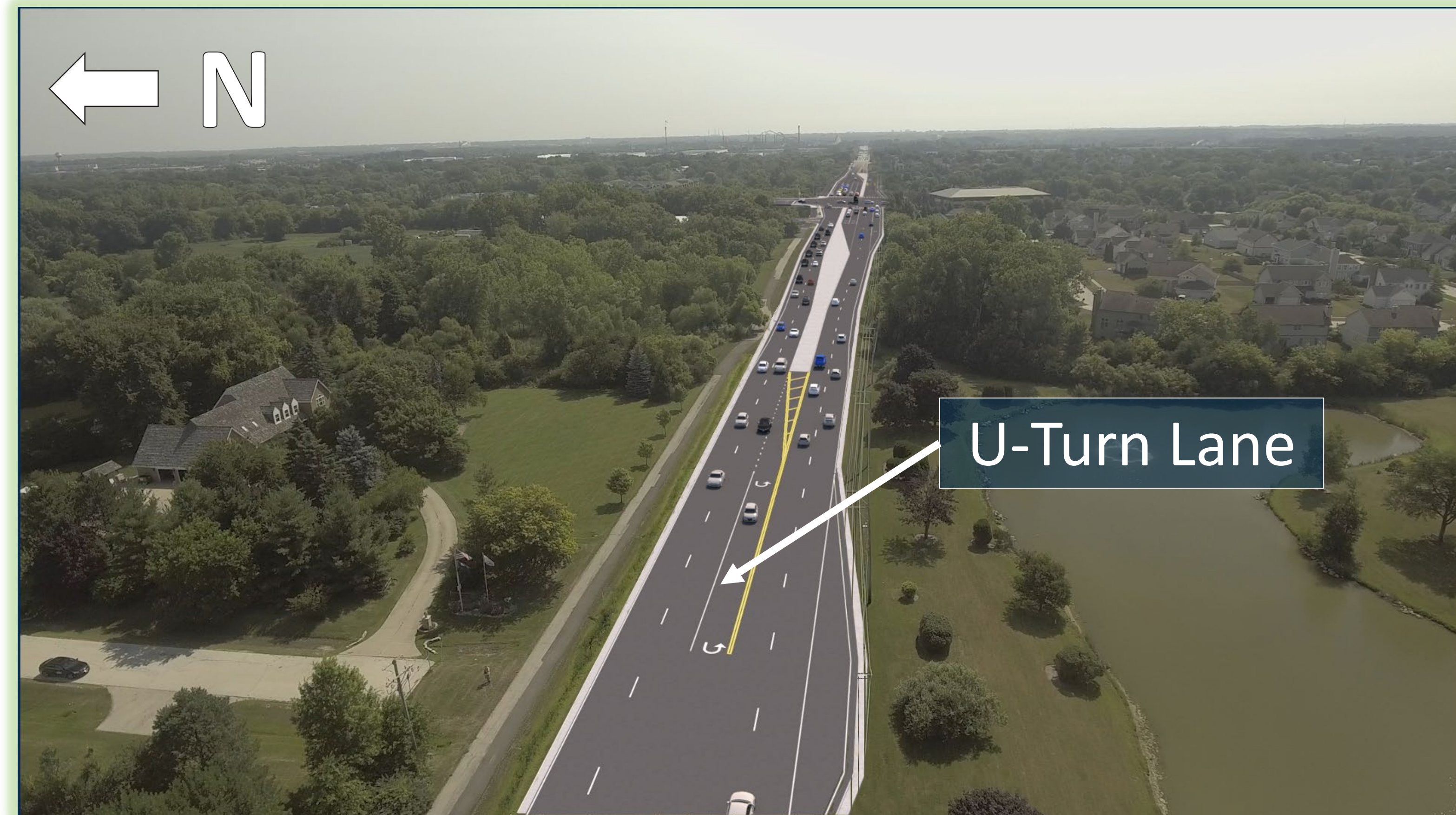
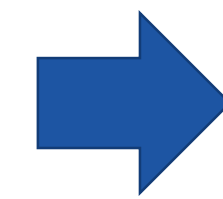
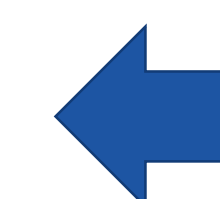


# Proposed Conditions

- U-Turn movements allow for traffic to turn around after exiting commercial driveways.
- Managing access can result in better traffic flow, fewer crashes, and a better shopping experience.



- Studies have shown that making a U-turn at a median opening is about 25% safer than a direct left turn from an access point.



- Non-motorized improvements are planned within the project limits.