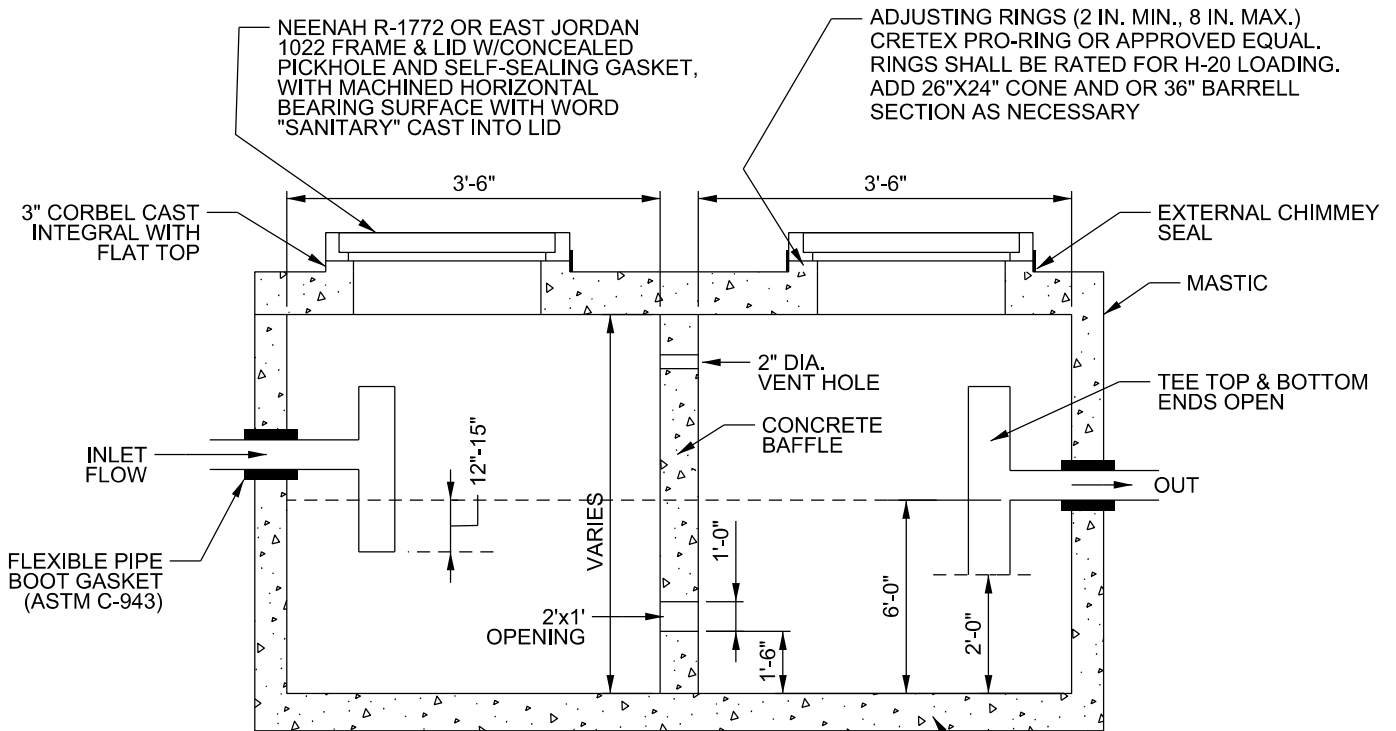


PLAN



SECTION A-A

1. THE GREASE TRAP SHALL BE LOCATED OUTSIDE AND IN A PLACE EASILY ACCESSIBLE FOR CLEANING AND INSPECTION.
2. EXTERIOR CHIMNEY SEALS CRETEX "CLASSIC", CANUSA "WRAPIDSEAL" OR ADAPTOR INC.
3. THE MINIMUM 1,000 GALLON HOLDING CAPACITY SHALL BE BASED UPON DEPTH MEASURED FROM THE TANK BOTTOM TO THE DISCHARGE INVERT. THE MINIMUM LIQUID DEPTH SHALL BE 6 FEET.
4. INTERIOR PIPING SHALL BE PVC, SCH 40 OR HEAVIER, GLUED JOINTS
5. CONCRETE GREASE BASIN SHALL BE LINED WITH AN APPROVED BIOGENIC CORROSION RESISTANT LINER OR FABRICATED WITH AN APPROVED CONCRETE ADDITIVE. SEE LCPW SPECIFICATIONS.