

---

*For questions regarding influenza and what is reportable to the Lake County Health Department, contact the Communicable Disease (CD) Program at (847) 377-8130*

---

## What is Influenza?

The Centers for Disease Control and Prevention (CDC) defines influenza (flu) as a contagious respiratory illness caused by influenza viruses. The flu virus can cause mild to severe illness. Serious outcomes of flu infection can result in hospitalization or death. Some people, such as older people, young children, and people with certain health conditions, are at high risk for serious flu complications. The best way to prevent the flu or lessen its symptoms, is to get vaccinated each year.

## Weekly Summary

Geographic Area	Flu/Influenza-Like Illness (ILI) Activity
<b>Lake County</b>	<ul style="list-style-type: none"> <li>• Visits for Upper Respiratory Illness/Influenza-like-illness (ILI) at LCHD/CHC clinics declined by 5% when compared to the previous week.</li> <li>• Lake County Schools: Total absenteeism increased by 20% over the previous week, possibly due to spring break, as ILI absenteeism generally remained flat.</li> </ul>
<b>Cook County</b>	Flu/ILI Activity is currently: <b>MODERATE (Week 11).</b>
<b>Wisconsin</b>	Flu/ILI Activity is currently: <b>MODERATE (Week 10).</b>
<b>Illinois</b>	Flu/ILI Activity is currently <b>MODERATE (Week 11).</b>
<b>United States</b>	Flu/ILI Activity is currently: <b>MODERATE (Week 11).</b>

---

*For the 2017-18 flu season, The U.S. 3 component (Trivalent) vaccine contains: A/Michigan/45/2015 (H1N1) pdm09-like virus, A/Hong Kong/4801/2014 (H3N2)-like virus, and a B/Brisbane/60/2008-like virus (Victoria lineage). The 4 component (Quadrivalent) influenza vaccine will also include a B/Phuket/3073/2013- like virus (B/Yamagata lineage) for this year's flu season.*

---

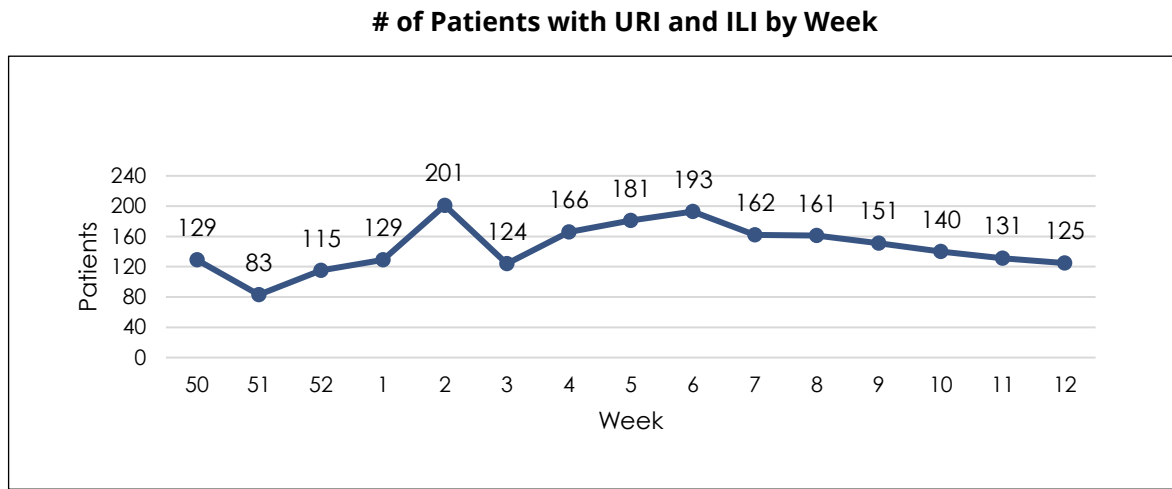
*Note: Our report contains different flu weeks for some geographic areas due to different reporting dates of sources.*

The Centers for Disease Control and Surveillance (CDC) have classified flu/Influenza-Like-Illness (ILI) activity levels as minimal (levels 1-3), **Low (levels 4-5)**, **Moderate (levels 6-7)**, and **High (levels 8-10)**. This classification helps in summarizing weekly flu/ILI surveillance information for a geographic area and making flu/ILI activity easier to interpret.

### County Data

#### LCHD/CHC (Federally Qualified Health Center): [Week 12 \(18 - 24 Mar 18\)](#)

Visits to the Lake County Health Departments Community Health Center clinics (LCHD/CHC), for both upper respiratory infections (URI), and/or influenza-like-illness (ILI), have been slowly declining for the last 6 weeks.



Source: Lake County Health Department Electronic Health Records, 2018.

#### Reportable to the Lake County Health Department: [Week 12 \(18 - 24 Mar 18\)](#)

Quick Stats	Week 12	Prior Week	Cumulative*
<b>Flu - Intensive care unit (ICU) admissions</b>	<b>1</b>	1	<b>92</b>
<b>Flu - Pediatric Deaths (0-18)</b>	<b>0</b>	0	<b>2</b>
<b>Flu/ILI - Outbreaks (Congregate settings) **</b>	<b>0</b>	2	<b>30</b>

Source: Illinois' National Electronic Disease Surveillance System (I-NEDSS)

\*Cumulative since week 35 and through the flu season. Single positive flu tests are not reportable in Illinois.

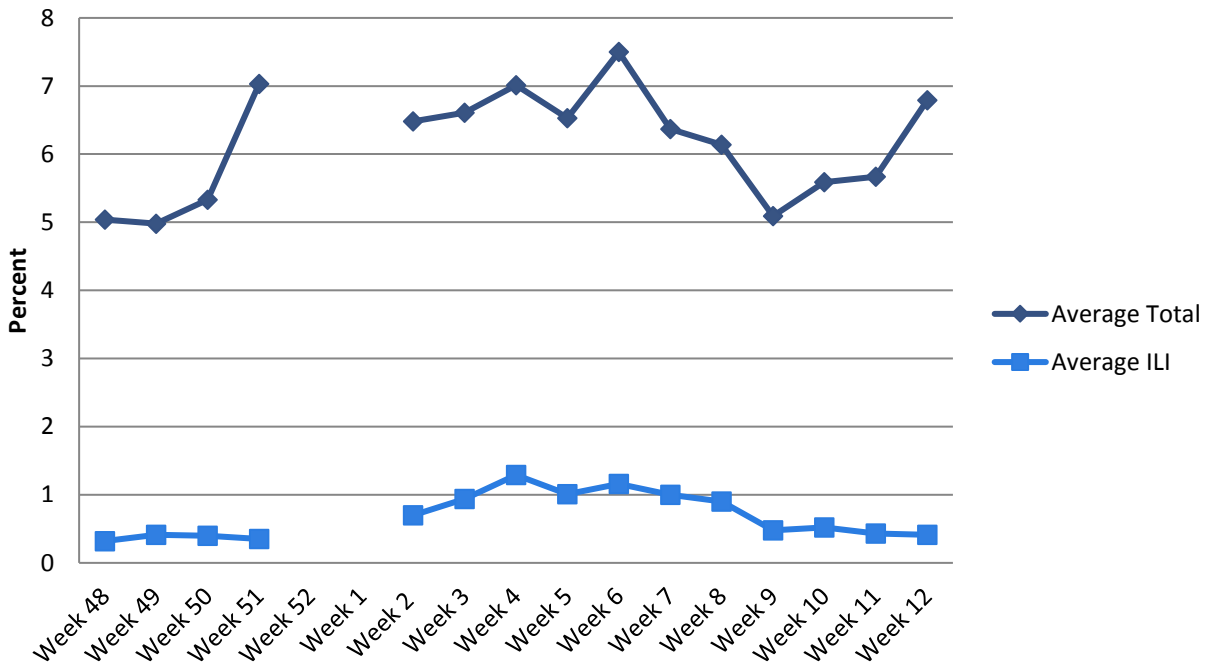
\*\*Correctional, Long Term Care (LTC) Facilities, group homes and Hospitals.

**School Influenza-Like Activity Surveillance: [Week 12 \(18 – 24 Mar 18\)](#)**

Reporting School Districts: Antioch (34), Community (128), Libertyville (70), North Shore (112), Waukegan (60), and Zion (6).

Quick Stats	Current Week	Previous Week
Schools tracking and reporting absenteeism data	42	42
Schools reporting ILI absenteeism (≥5%)	0	0
Schools/Pre-schools reporting general absenteeism (≥10%)	30	21

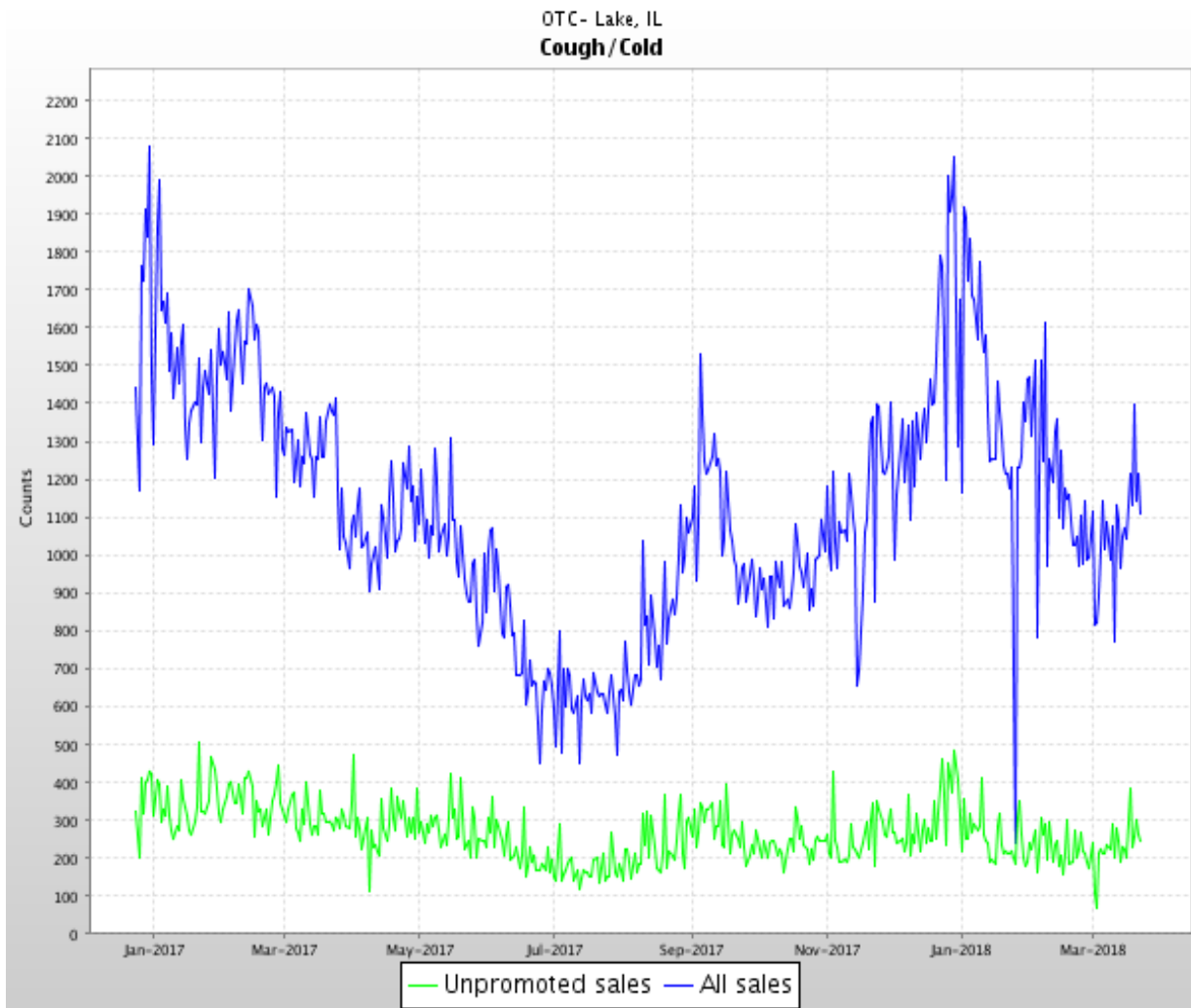
**\*Average % Absenteeism and Influenza-like-Illness (ILI)  
Lake County Schools (2017-18)**



Source: Participating Lake County School Districts (2017-2018)  
 Week 47: Thanksgiving Holiday – data not tracked by districts.  
 Weeks 52-1: Christmas & New Year Holidays – data not tracked by districts.

**Sentinel Pharmacies: Past 15 months (25 Dec 16 - 24 Mar 18)**

There are 71 pharmacies in Lake County who report the sales amount of over-the-counter (OTC) cough and cold medications for Upper Respiratory Infections. This report includes "All Sales" which refers to all cough and cold medicines that were sold in total, as well as "Un-promoted Sales", which are cough and cold medicines not promoted but sold.



Source: Real Time Outbreak and Disease Surveillance (RODS), 2018.

## State Data

**Illinois: Week 11 (11 – 17 Mar 18)**

Current Week Quick Stats		
Illinois Influenza Geographical Spread	<b>Regional</b> (see flu activity chart below for definition)	
Percent of outpatient visits for ILI	2.22% ( <b>baseline: 1.80%</b> )	
Percent of Influenza Positive Tests	Current Week: 18.7%	Season: 22.1%
Influenza-Associated ICU Admissions	Current Week: 39	Season: 1,945
Influenza Outbreaks	Current Week: 3	Season: 418
Influenza Associated Pediatric Deaths (Season Total)	5	

Source: Illinois Department of Public Health, Influenza Surveillance, 2017-2018.

### Illinois Department of Public Health (IDPH) Flu Activity Rating by Geographical Spread

<b>No Activity</b>	No laboratory confirmed cases of influenza.
<b>Sporadic Activity</b>	Isolated lab-confirmed cases <u>OR</u> lab confirmed outbreak in one institution.
<b>Local Activity</b>	Recent (within the past 3 weeks) lab evidence of influenza in region with increased ILI <u>OR</u> recent (within the past 3 weeks) lab evidence of influenza in region with the outbreaks; virus activity is no greater than sporadic in other regions.
<b>Regional Activity</b>	Increased ILI in > 2 but less than half of the regions <u>AND</u> recent (within the past 3 weeks) lab confirmed influenza in affected regions. <u>OR</u> institutional outbreaks (ILI or lab confirmed) in > 2 and less than half or regions <u>AND</u> recent lab confirmed influenza in affected regions. A region is defined as the regions States use for public health purposes.
<b>Widespread Activity</b>	Increased ILI and/or institutional outbreaks (ILI or lab confirmed) in at least half of the regions <u>AND</u> recent (within the past weeks) lab confirmed influenza in the state.

Source: Illinois Department of Public Health, Influenza Surveillance, 2017-2018.

## National Data

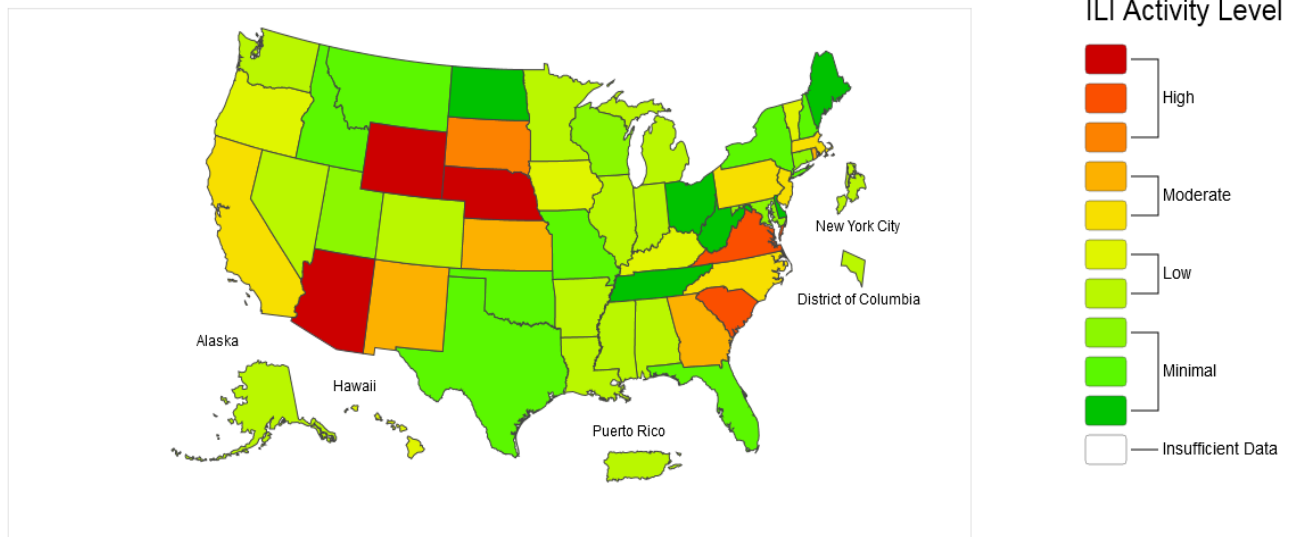
Center for Disease Control and Prevention (CDC): [Week 11 \(11 – 17 Mar 18\)](#)

Flu/Influenza-Like Illness (ILI) activity decreased in the United States

- **Viral Surveillance:** Overall, influenza A(H3) viruses have pre-dominated this season. However, in recent weeks the proportion of influenza A viruses has declined, and during week 11, influenza B viruses were more frequently reported than influenza A viruses. The percentage of respiratory specimens testing positive for influenza in clinical laboratories decreased.
- **Influenza-Associated Pediatric Deaths:** Five influenza-associated pediatric deaths were reported.
- **Geographic Spread of Influenza:** The geographic spread of influenza in 17 states was reported as widespread; Guam, Puerto Rico and 26 states reported regional activity; the District of Columbia and five states reported local activity; and the U.S. Virgin Islands and two states reported sporadic activity.



2017-18 Influenza Season Week 11 ending Mar 17, 2018



\*This map uses the proportion of outpatient visits to healthcare providers for influenza-like illness to measure the ILI activity level within a state. It does not, however, measure the extent of geographic spread of flu within a state. Therefore, outbreaks occurring in a single city could cause the state to display high activity levels.

\*Data collected in ILINet may disproportionately represent certain populations within a state, and therefore may not accurately depict the full picture of influenza activity for the whole state.

\*Data displayed in this map are based on data collected in ILINet, whereas the State and Territorial flu activity map are based on reports from state and territorial epidemiologists. The data presented in this map is preliminary and may change as more data is received.

\*Differences in the data presented by CDC and state health departments likely represent differing levels of data completeness with data presented by the state likely being the more complete.

\*For the data download you can use Activity Level for the number and Activity Level Label for the text description.

Source: Centers for Disease Control and Prevention, *Flu Activity and Surveillance, 2017-2018*.