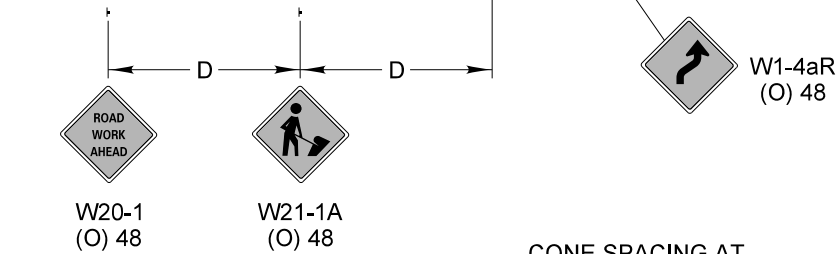
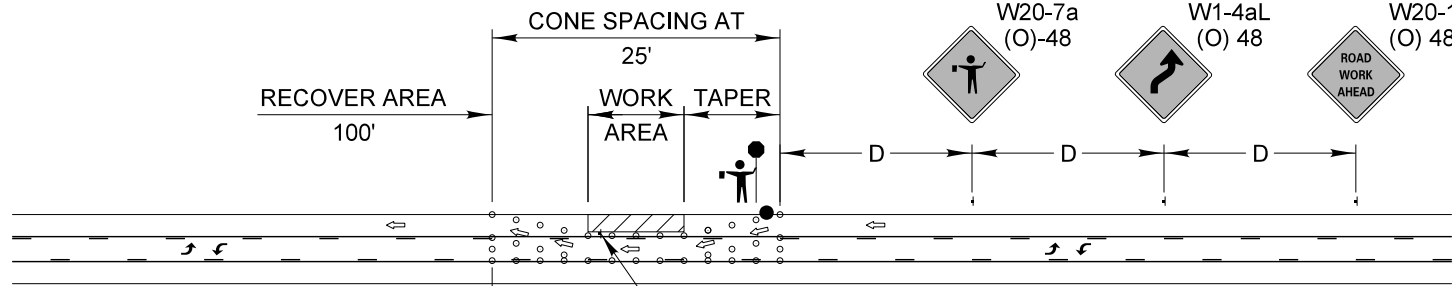


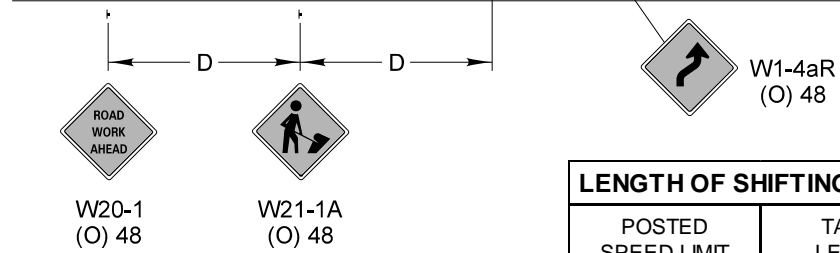
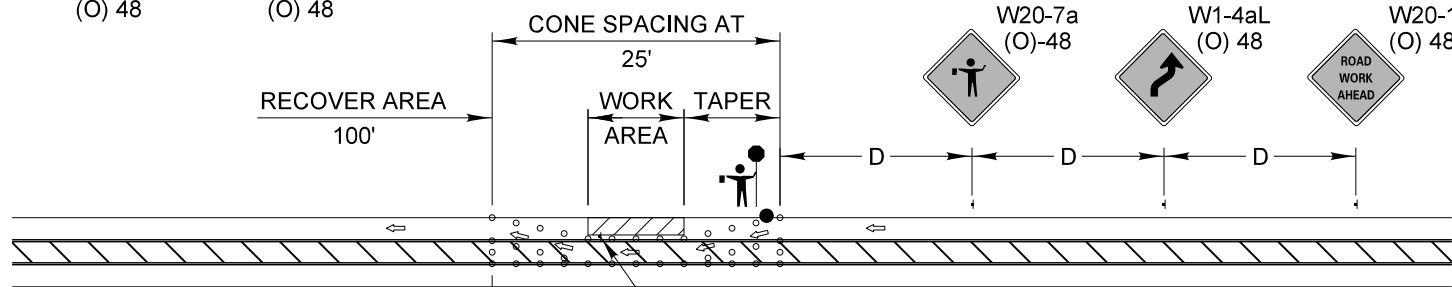
TYPICAL APPLICATION OF TRAFFIC CONTROL DEVICES
for HIGHWAY CONSTRUCTION, CONTRACT MAINTENANCE
and UTILITY OPERATIONS

3 LANE ROAD SECTION with
2-WAY LEFT TURN LANE

NOT TO SCALE



3 LANE ROAD SECTION with
FLUSH MEDIAN



GENERAL NOTE:

This Standard is used where during the day only, any vehicle, equipment, workers or their activities encroach on a 3 lane, two way pavement requiring the closure of one traffic lane.

SYMBOLS

- WORK AREA
- CONE
- SIGN ON PORTABLE OR PERMANENT SUPPORT
- FLAGGER STATION
- FLAGGER WITH SLOW PADDLE

LENGTH OF SHIFTING TAPER

POSTED SPEED LIMIT	TAPER LENGTH
30 MPH	100'
35 MPH	125'
40 MPH	150'
45 MPH	275'
50 MPH	300'
55 MPH	325'

ADVANCE WARNING SIGN SPACING TABLE

POSTED SPEED LIMIT	DISTANCE BETWEEN SIGNS "D"
40 MPH or less	200 FEET
45-50 MPH	350 FEET
55 MPH	500 FEET

REVISIONS	DATE
Title Block Revision	8/1/09
Reformat LCDOT Standard	7/15/10



APPROVED BY: A. KHAWAJA
DATE: APRIL 1, 2007

TYPICAL LANE CLOSURE
3 LANE ROAD SECTION

LC7005