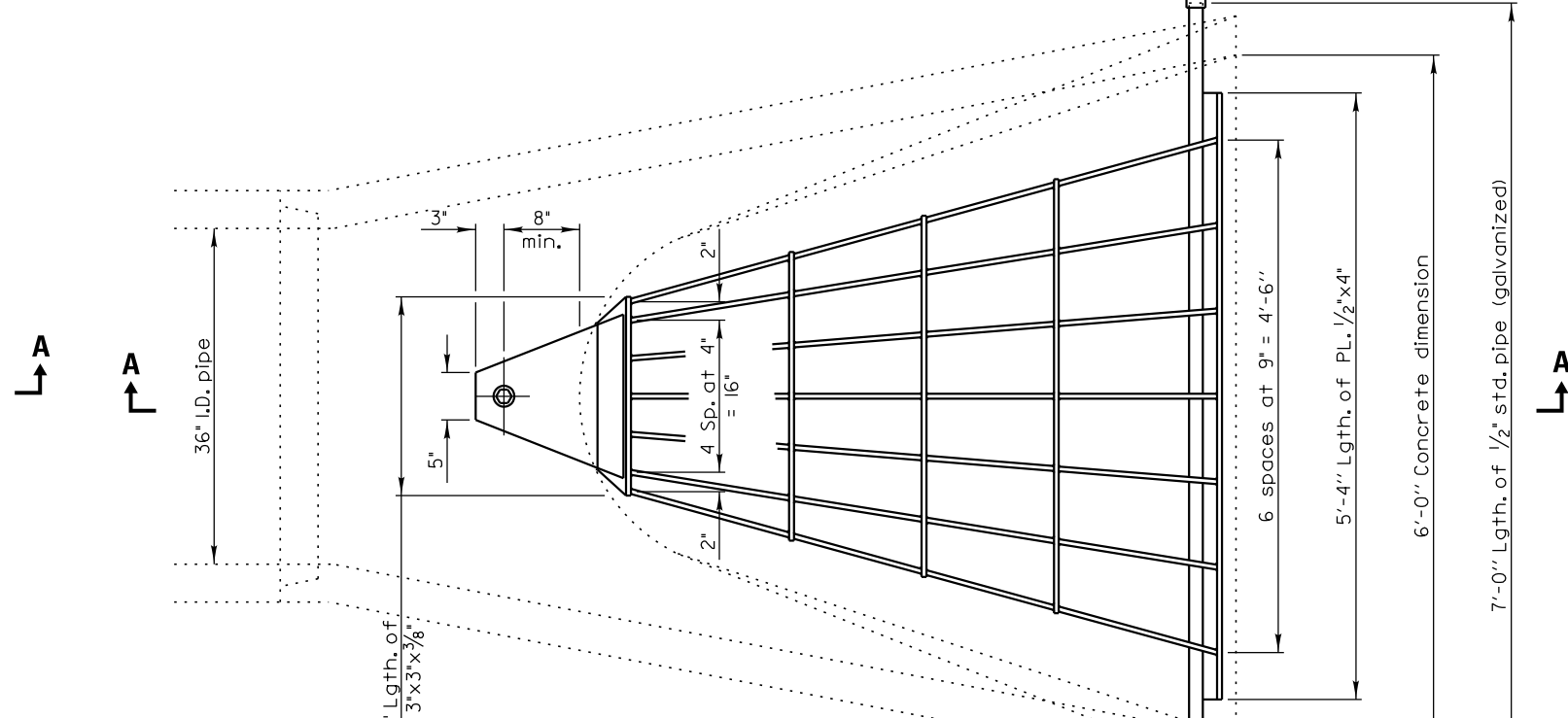


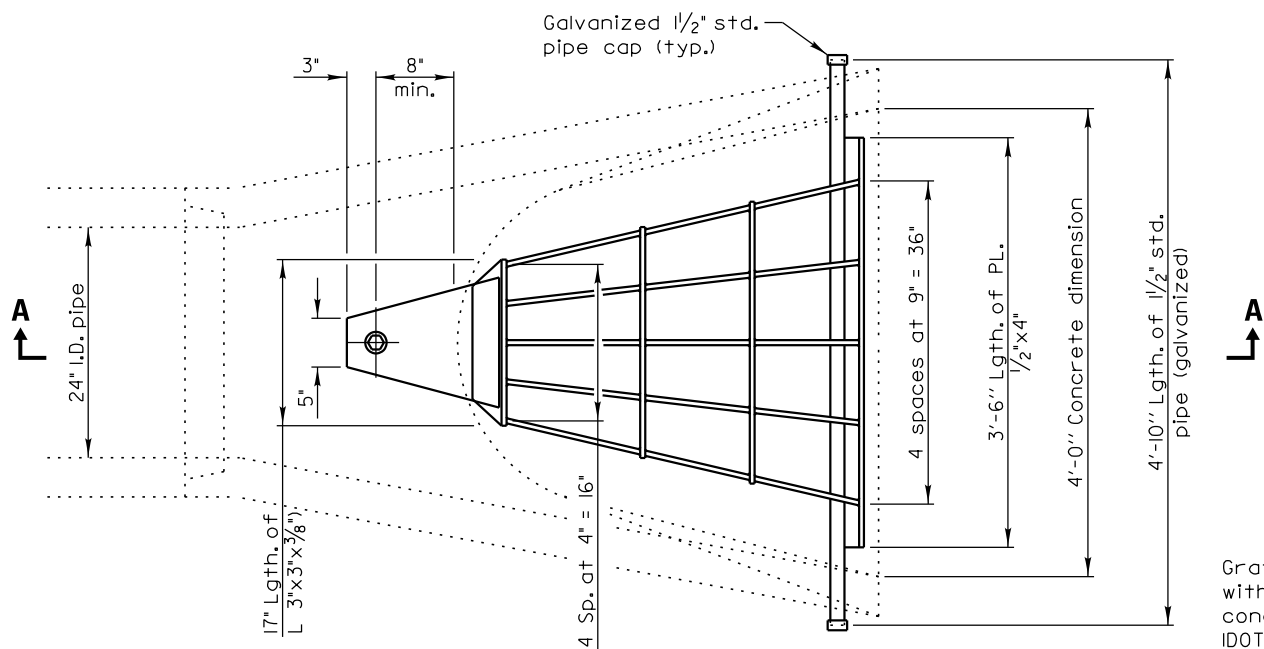
PLAN

Quantity of steel= 210 lbs.



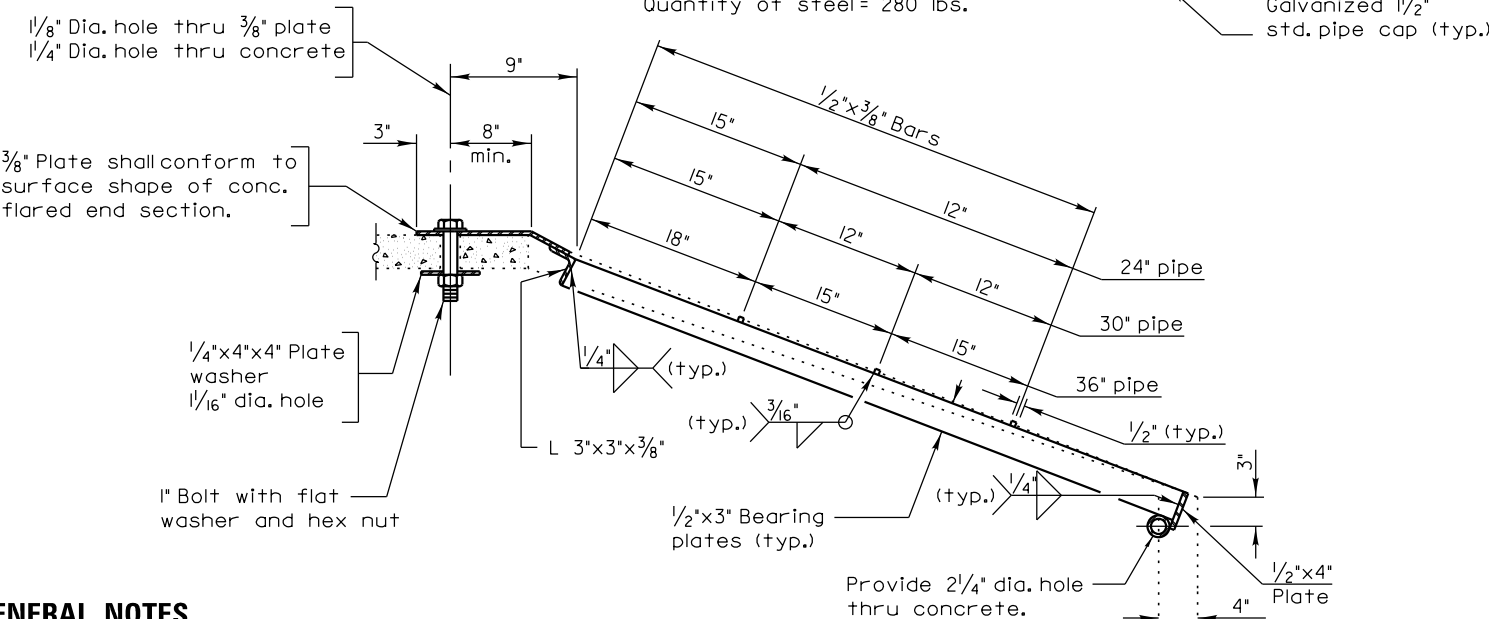
PLAN

Quantity of steel= 280 lbs.



PLAN

Quantity of steel= 150 lbs.



GENERAL NOTES

Grating details shown are intended for use with particular sizes of precast reinforced concrete flared end sections as shown on IDOT standards 542301 and 542306.

Approximate quantity of steel shown includes total quantity of grating, bolts, nuts, washers and steel pipe.

Holes in the precast concrete flared end sections shall be cored to the diameters noted. If cone-out on the other end of the hole occurs, the hole shall be filled with grout to correct the diameter of the hole.

SECTION A-A

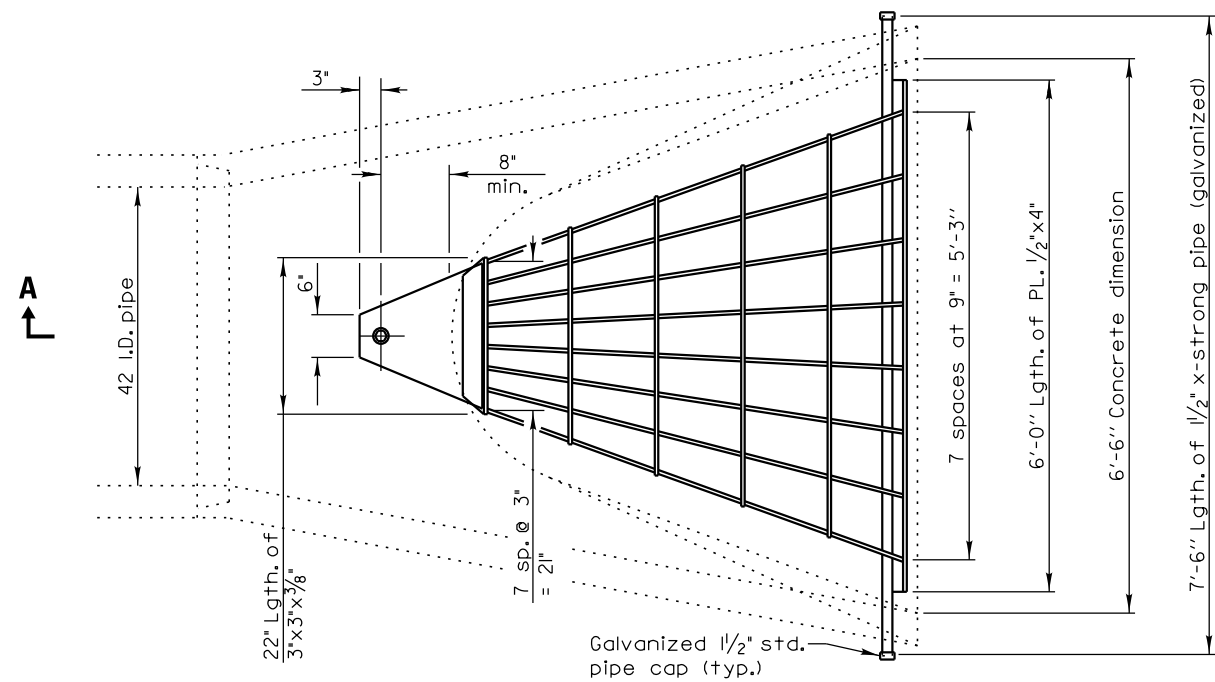
REVISIONS	DATE		APPROVED BY: M. G. ZEMAITIS
			DATE: DEC. 18, 2014
<p>GRATING FOR CONCRETE FLARED END SECTIONS (24" - 54")</p>			<p>LC5403</p>
<p>SHEET 1 OF 2</p>			

NO.	REVISIONS / REMARKS	DATE	BY	SURVEYOR:	
	DESCRIPTION	/ /		DSG NR/LIAISON:	/
		/ /		PLOTTED BY:	hdl7512 12/19/2014

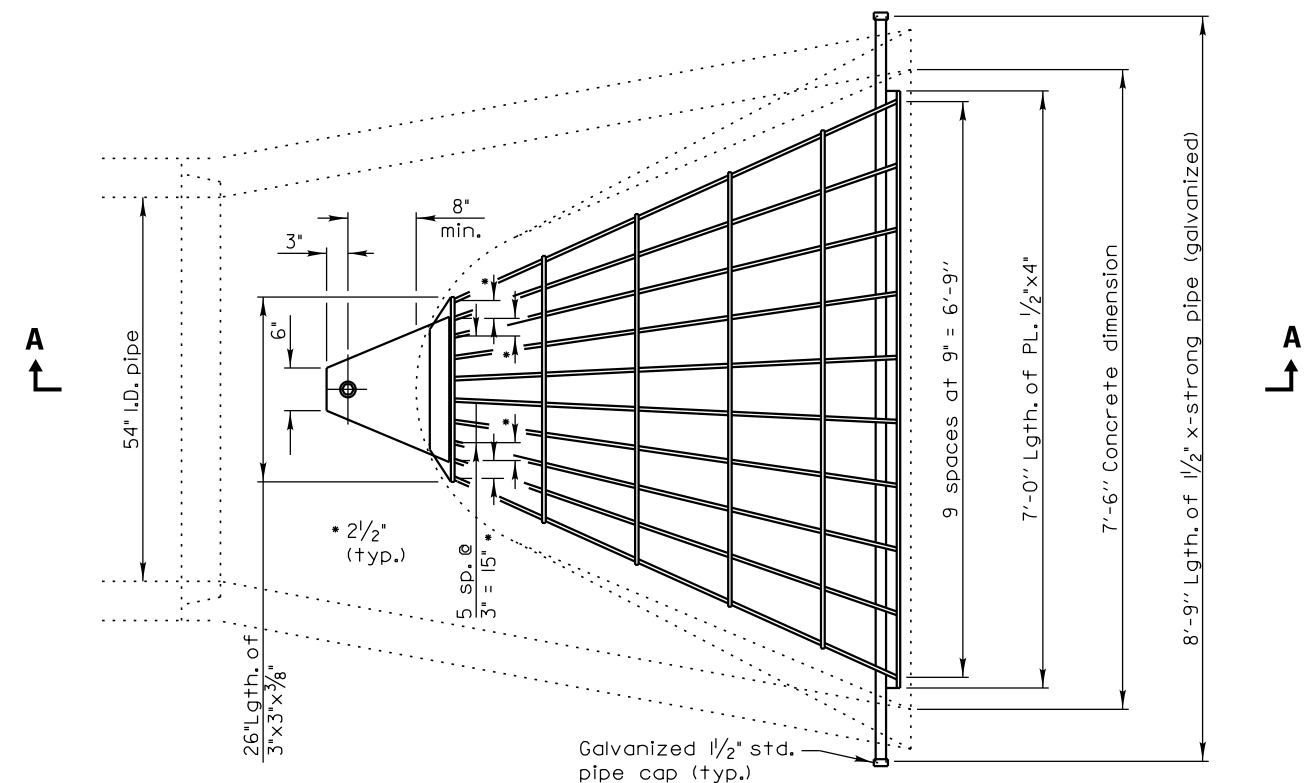


PROJECT NAME
LAKE COUNTY STANDARDS & DETAILS

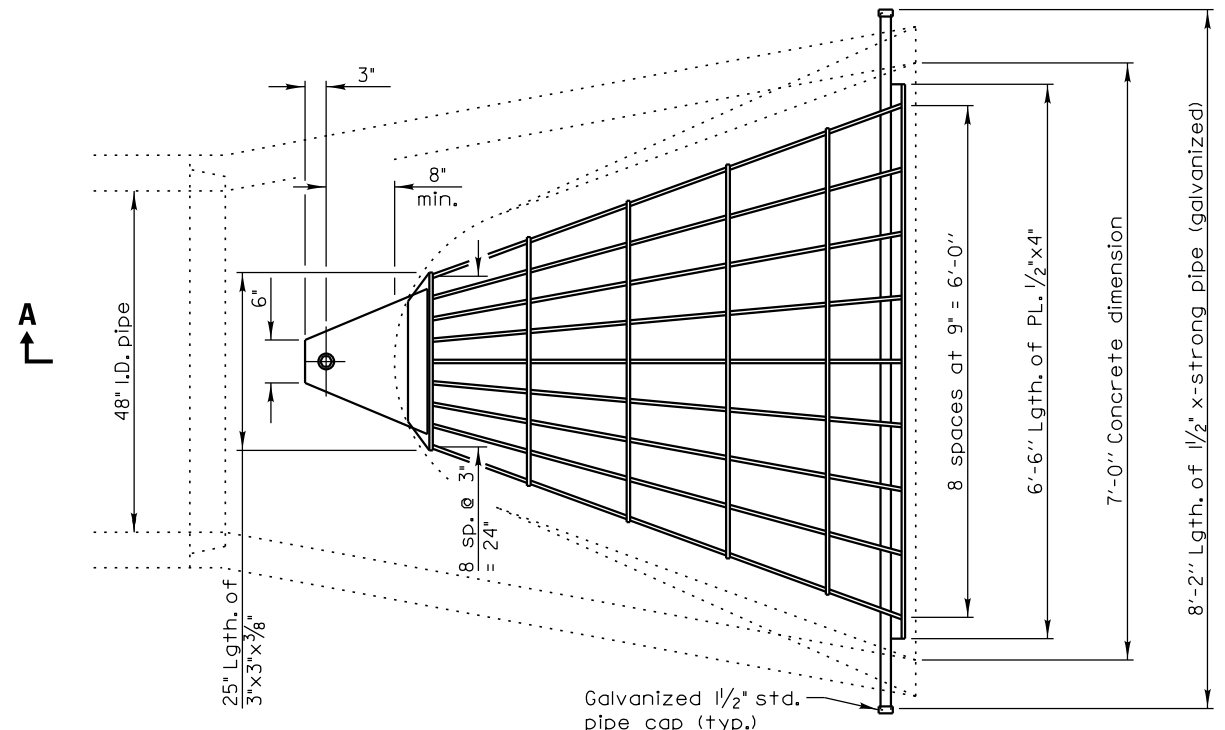
ROUTE	SECTION	SECTION NUMBER	SHEET	SHEETS
CHXX	XXX	XX-00XXX-XX-XX	X	X



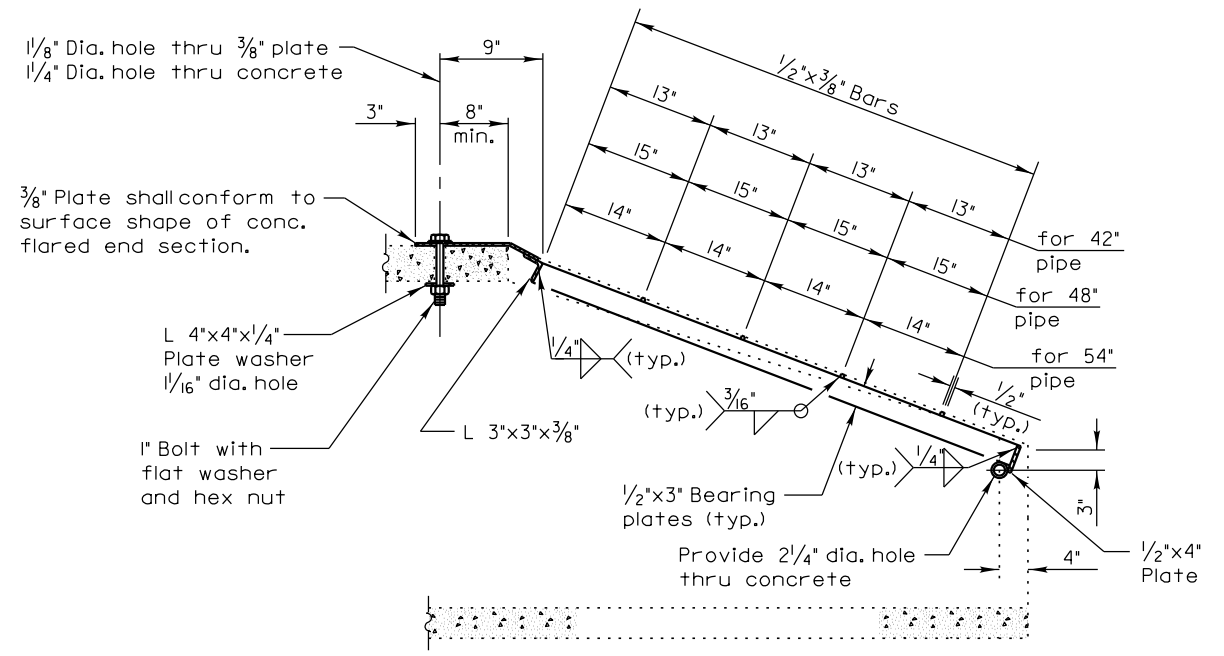
PLAN
Quantity of steel = 320 lbs.



PLAN
Quantity of steel = 425 lbs.



PLAN
Quantity of steel = 400 lbs.



SECTION A-A

REVISIONS	DATE		APPROVED BY: M. G. ZEMAITIS
			DATE: DEC. 18, 2014
GRATING FOR CONCRETE FLARED END SECTIONS (24" - 54")			LC5403
SHEET 2 OF 2			

REVISIONS / REMARKS				
NO.	DESCRIPTION	DATE	BY	SURVEYOR:



PROJECT NAME		ROUTE	SECTION	SECTION NUMBER	SHEET	SHEETS
LAKE COUNTY STANDARDS & DETAILS		CHXX	XXX	XX-00XXX-XX-XX	X	X