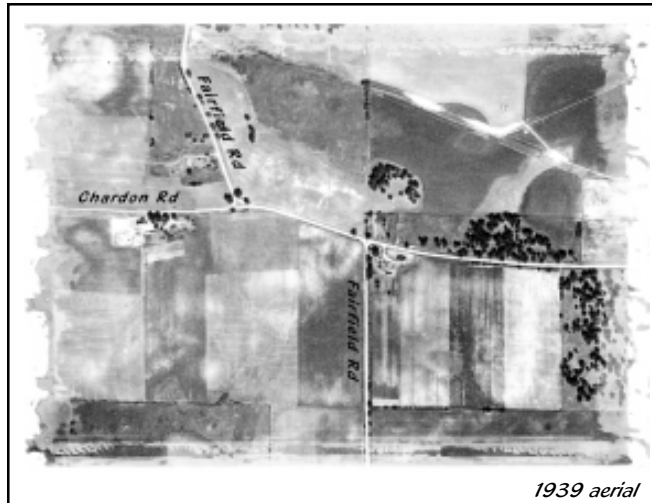
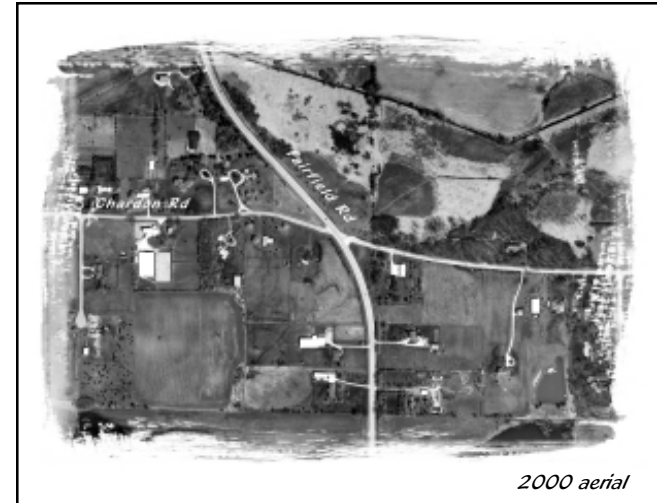


A Historical Note

Paper and digital images of a variety of aerial photography, dating from 1939 through 2000, are available from the Lake County Planning, Building and Development Department.



1939 aerial



2000 aerial

The development of the highway system in Lake County can be illustrated by the comparison of these two aerials. The historical aerial from 1939 (*above, left*) illustrates the typical secondary road system existing in the county before World War II. Roads did not provide continuity of travel, nor were they improved to carry much traffic. The 2000 aerial (*above, right*) indicates the improvements made in the late 1950's that made Fairfield Road a typical two lane county highway as a part of the secondary arterial highway system. While this aerial still shows extensive undeveloped lands, many areas of the county have been developed. The two lane county highways are being reconstructed to 4 lane roads to better handle the traffic generated by urban land uses.