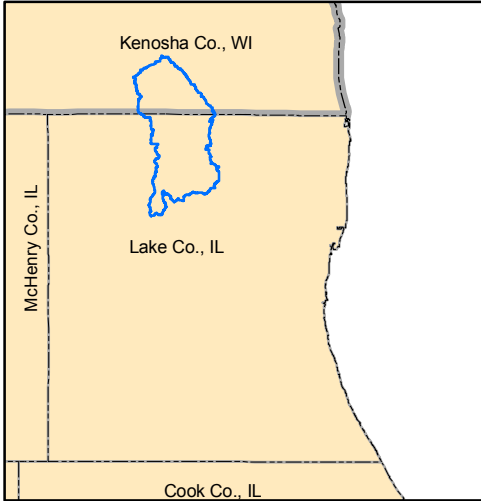


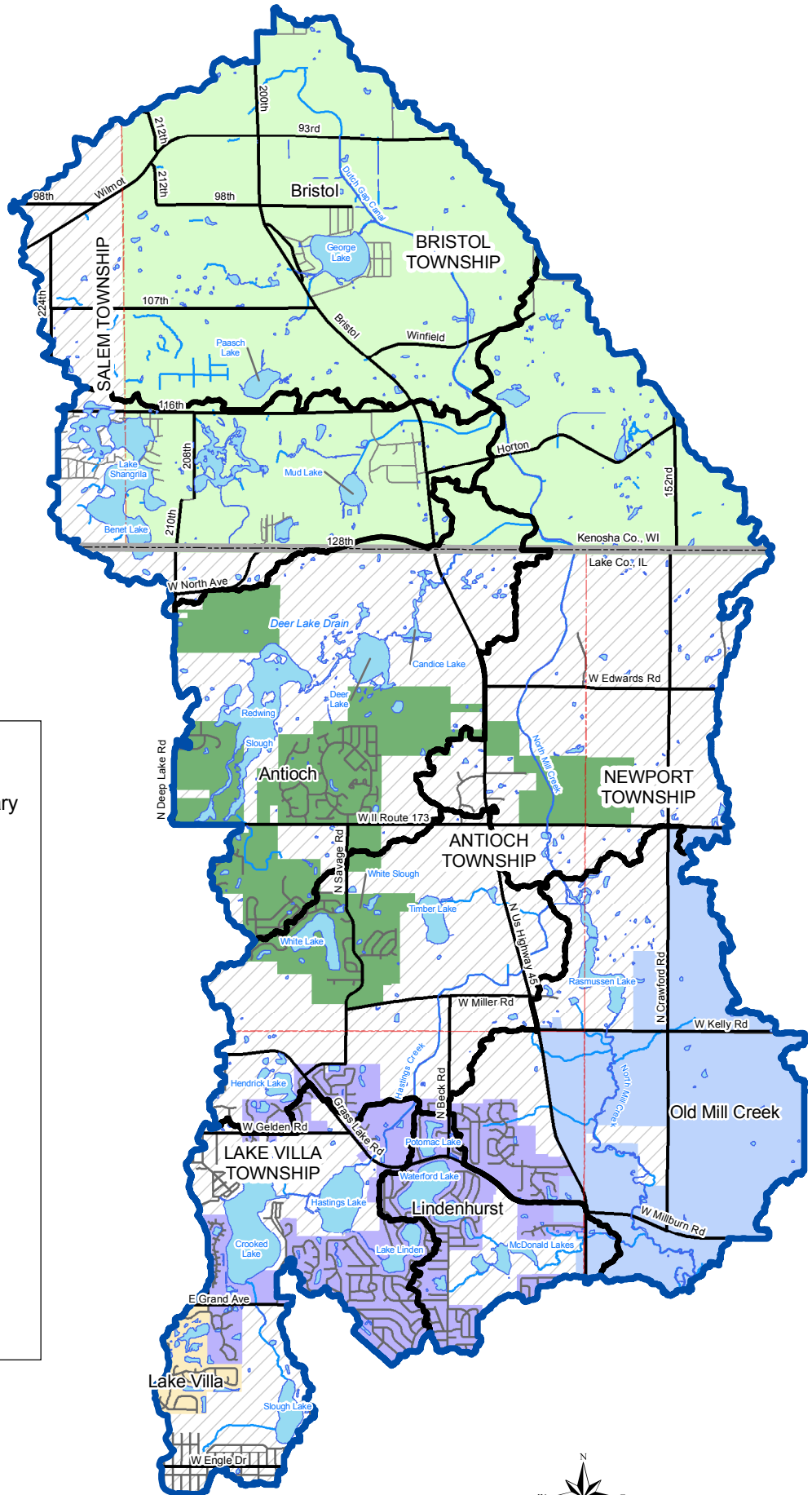

Municipalities and Townships

North Mill Creek Watershed Location



Legend

- North Mill Creek Watershed Boundary
 - Subwatershed Management Units
 - Township Boundaries
 - Open Water
 - IL-WI State Line
 - Major Roads
 - Streets
 - Rivers & Streams
- ### Municipalities
- Village of Bristol
 - Village of Antioch
 - Village of Lake Villa
 - Village of Lindenhurst
 - Village of Old Mill Creek
 - Unincorporated

STORMWATER MANAGEMENT COMMISSION

This map is provided for general locational information only. Map features have been derived from various sources, each of which has its own scale and accuracy. The locations of all features are approximate.
Lake County Stormwater Management Commission
August 30, 2007

DATA SOURCES:
Lake County Department of Information And Technology, GIS & Mapping Division
Kenosha County, GIS Division
Southeastern Wisconsin Regional Planning Commission
Wisconsin Department of Natural Resources

