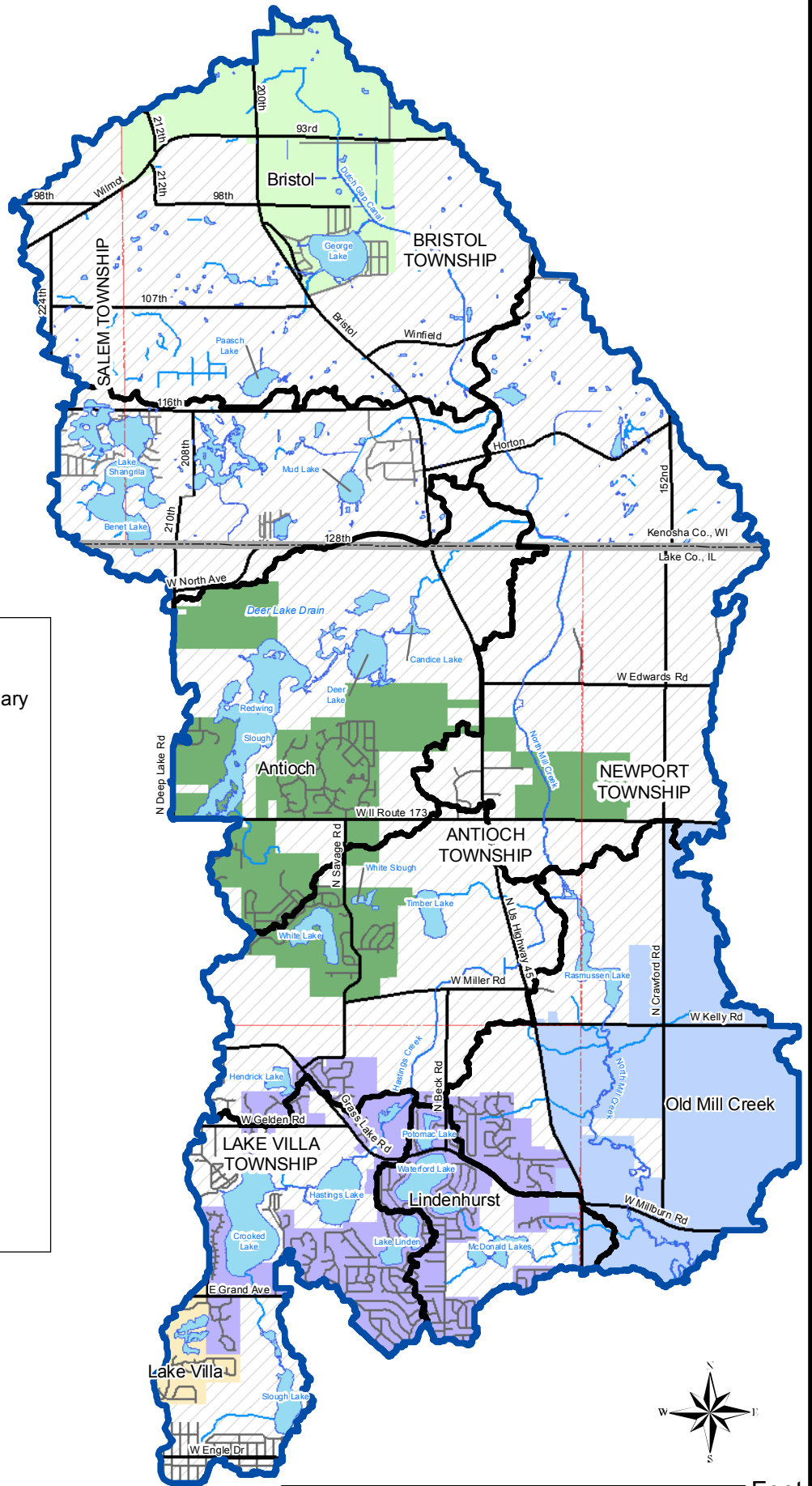
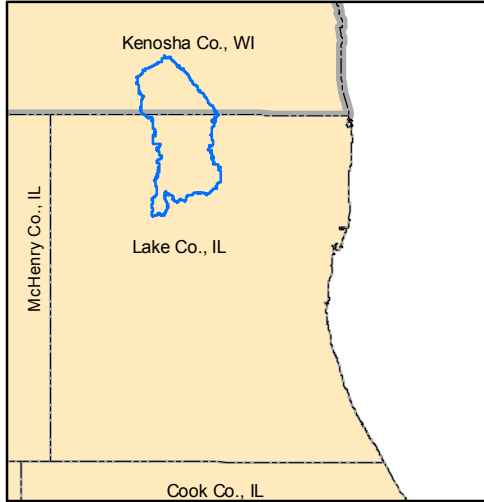


Municipalities and Townships in North Mill Creek/Dutch Gap Watershed

North Mill Creek Watershed Location



Legend

- North Mill Creek Watershed Boundary
- Subwatershed Management Units
- Township Boundaries
- Open Water
- IL-WI State Line
- Major Roads
- Streets
- Rivers & Streams

Municipalities

- Village of Bristol
- Village of Antioch
- Village of Lake Villa
- Village of Lindenhurst
- Village of Old Mill Creek
- Unincorporated



This map is provided for general locational information only. Map features have been derived from various sources, each of which has its own scale and accuracy. The locations of all features are approximate.
 Lake County Stormwater Management Commission
 August 30, 2007

DATA SOURCES:
 Lake County Department of Information And Technology, GIS & Mapping Division
 Kenosha County, GIS Division
 Southeastern Wisconsin Regional Planning Commission
 Wisconsin Department of Natural Resources

