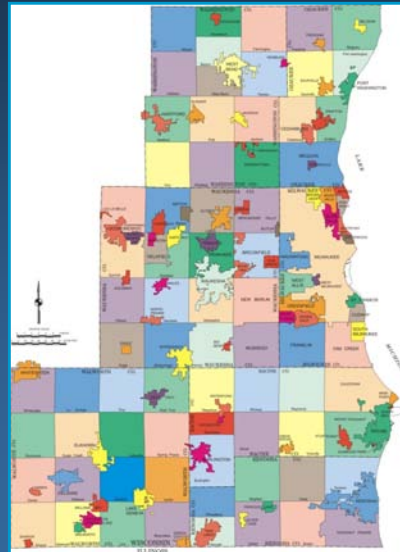




Southeastern Wisconsin Regional Planning Commission (SEWRPC)

➤ **Southeastern Wisconsin Region**

- **154 general purpose units of government**
 - 7 counties
 - 29 cities
 - 60 villages
 - 58 towns
- **4 urbanized areas**
 - Milwaukee
 - Racine
 - Kenosha
 - Round Lake Beach
- **Relationship to State**
 - 5% – Area
 - 35 – 40% – Population, Employment, Economic Value



3



SEWRPC Environmental Planning Projects and Responsibilities

- Environmental Planning
 - Water quality management
 - Flood hazard mapping and flood mitigation
 - Stormwater management
 - Lake and stream management
 - Sewer service areas
 - Water supply management
 - Natural areas planning
 - Natural resources management
 - Educational and informational services

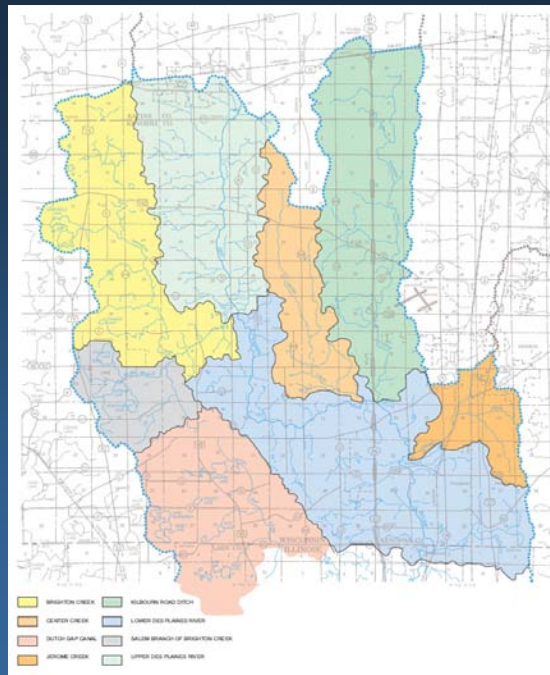


DES PLAINES RIVER WATERSHED STUDY

- SEWRPC Planning Report No. 44, *A Comprehensive Plan for the Des Plaines River Watershed*, 2003, three parts.
- Access online at sewrpc.org, "Data & Resources," "Publication Search."



Subwatersheds in the Wisconsin Portion of the Des Plaines River





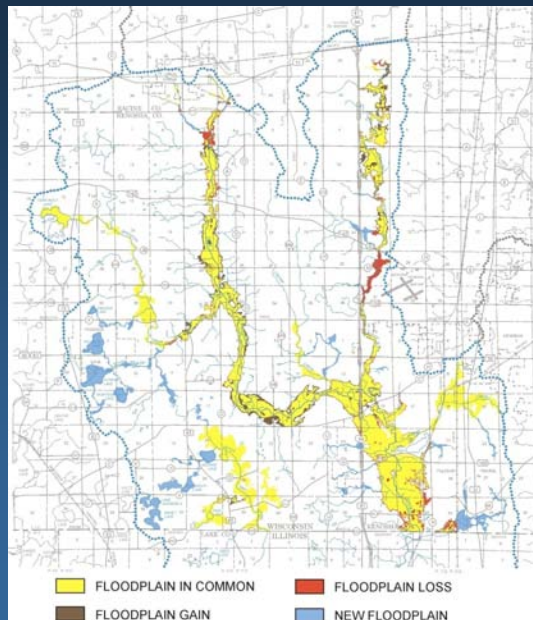
Streams Studied

- Des Plaines River (21.8 miles)
- Jerome Creek (4.6 miles)
- Kilbourn Road Ditch (12.6 miles)
- Center Creek (3.7 miles)
- Brighton Creek (9.0 miles)
- Dutch Gap Canal (4.1 miles)
- Small tributaries (53.2 miles)



Flood Flows and Profiles for 109 Miles of Stream

- 64 miles of updated floodplains
- 45 miles of new floodplains
- Village of Pleasant Prairie has adopted new or updated floodplains along over 30 miles of stream





Watershed Study Overview

➤ Four Interrelated Plan Elements

- Land Use, Park and Open Space
- Floodland and Stormwater Management
- Water Quality Management
- Fisheries Management

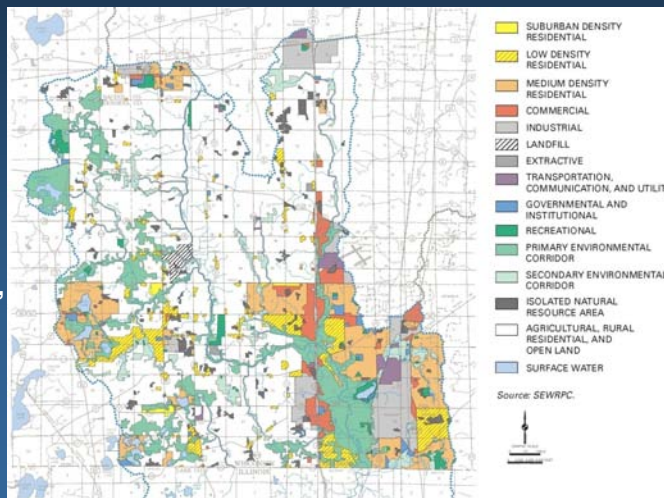
➤ Implementation Period: 2003 - 2030



Recommended Land Use Plan

➤ Land Use Plan

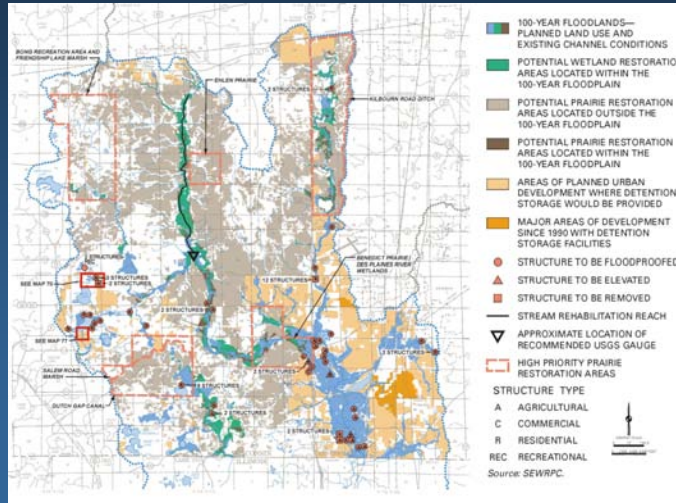
- 1990: 12.5 square miles (3,240 ha), or 9.4%, urban
- 2030: 33 square miles (8,550 ha), or 25%, urban
- Corresponding decreases in rural lands





Recommended Floodland and Stormwater Management Plan

- Abate flood damages for 100-year Flood
- Components Floodproofing (51), Elevation (4), & Removal (17)
 - Detention Storage for New Development
 - 100-year: 0.3 cfs/acre
 - Two-year: 0.04 cfs/acre
 - Prairie Restoration (Six square miles)
 - Wetland Restoration (3.1 square miles in delineated floodplains)
 - Stream rehabilitation program for Upper Des Plaines



Recommended Water Quality Management Plan

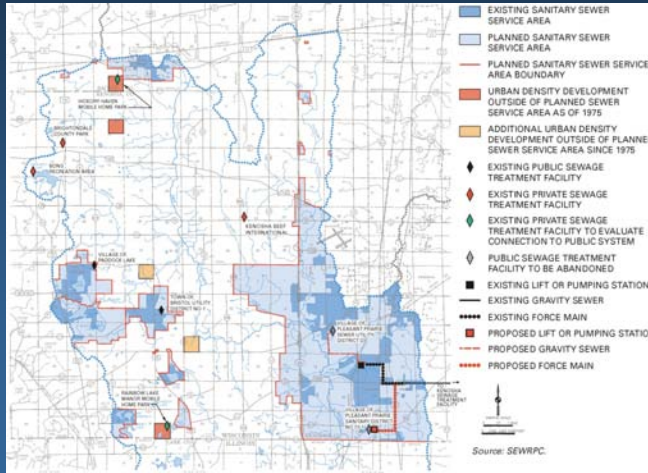
- Based on:
 - Adopted Regional WQMP
 - County Land and Water Resource Management Plans
- Public and Private Sewage Treatment Plants
- Nonpoint Source Pollution Control



Recommended Water Quality Management Plan

➤ Private Sewage Treatment Plants

- When significant upgrading is needed:
 - Hickory Haven Mobile Home Park to Village of Union Grove
 - Rainbow Lake Manor Mobile Home Park to Bristol



Recommended Water Quality Management Plan

➤ Agricultural and Urban Nonpoint Source Pollution Control

- Consistent with County land and water resource management plans
- Consistent with performance standards of Chapter NR 151 of the *Wisconsin Administrative Code* (Adopted by State in October 2002)
- Level of Control of Runoff from Two-year Storm is More Stringent Under Watershed Study



Recommended Water Quality Management Plan

- Water Quality and Wildlife Habitat
 - Reduce streambank erosion
 - Reduce sedimentation in wetlands
 - Acquire and preserve environmental corridors and natural and critical species habitat areas
 - Encourage collection of water quality data by lake associations
 - Encourage establishment of riparian buffers



Recommended Fisheries Management Plan

- Preparation of subwatershed-level fisheries management plans
 - Tier 1 activities: Watershed management consistent with water quality management plan
 - Tier 2 activities: Stream corridor and lake management
 - Tier 3 activities: Streambank and shoreline
 - Tier 4 activities: Instream and lake



Recommended Fisheries Management Plan

- Protect threatened, endangered, and special concern species
- Control carp
- Enhance existing populations
- Coordinate with detailed stormwater management plans
- Develop and implement a monitoring and evaluation strategy



Plan Implementation

- Implementation Organizations
 - Federal, State, local governments, and private sector
 - Implementation responsibilities of each organization
- Financial and Technical Assistance
- Potential Funding Sources
 - Many Federal, State, and Private Grant and Loan Programs



Plan Adoption

- Plan Adopted by Regional Planning Commission on June 18, 2003
- Plan Adopted by Kenosha County Board on October 21, 2003



QUESTIONS AND COMMENTS