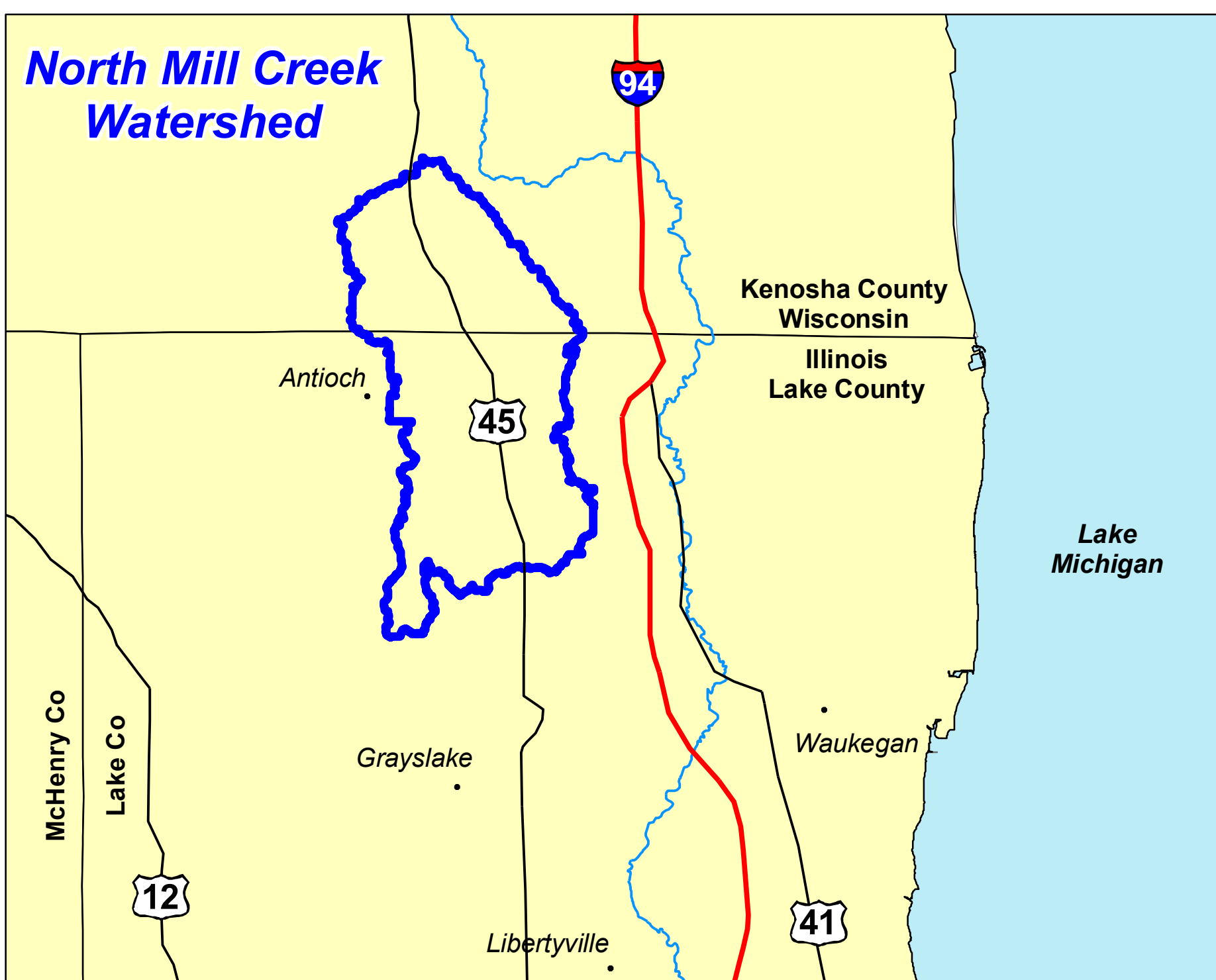
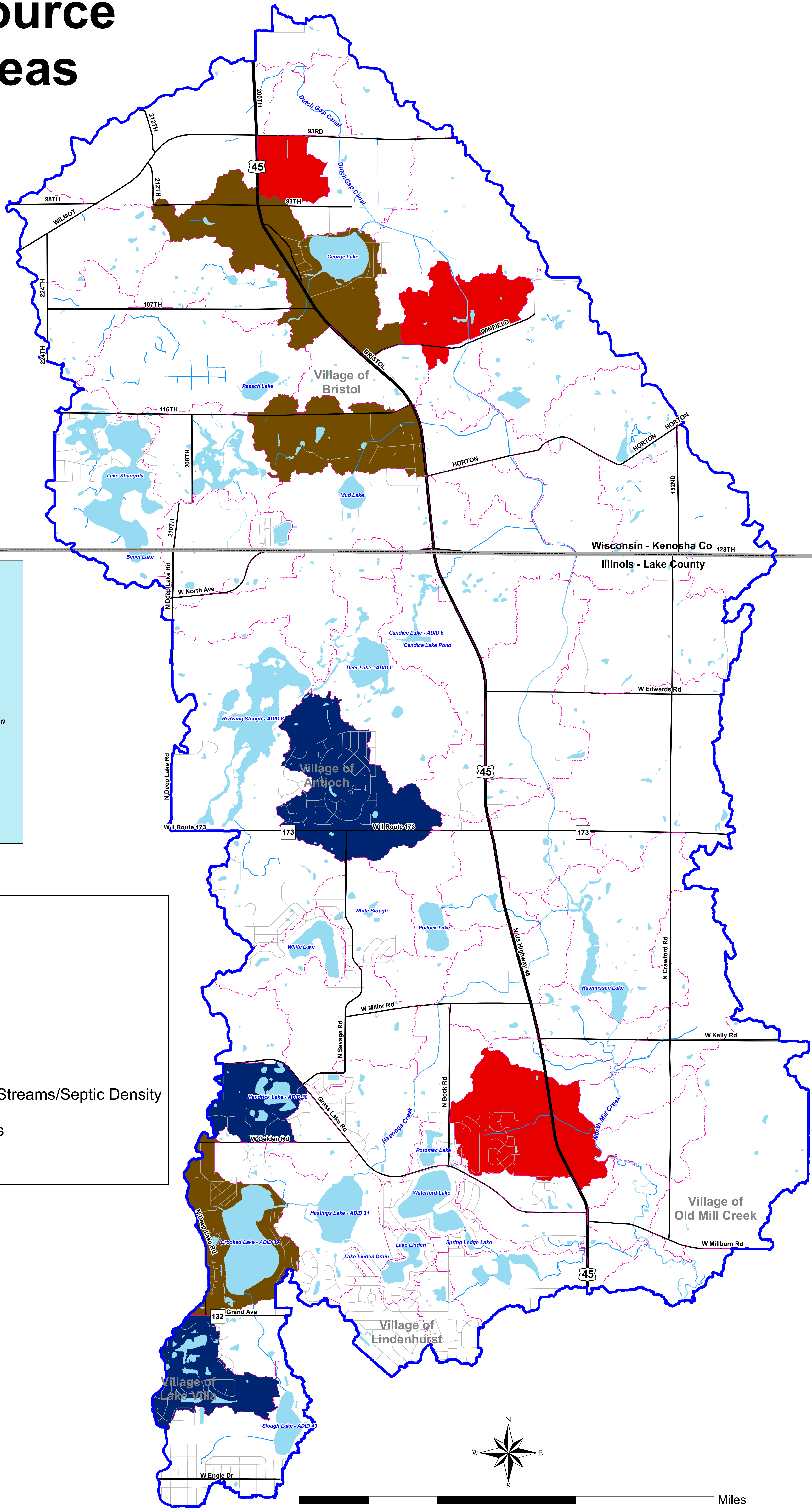



# Pollutant Source Critical Areas



-  North Mill Creek Watershed
-  State Boundary
-  Catchments
-  State Highways and Major Roads
-  Streets
-  Criteria 2 & 3 - Septic Adjacent to Streams/Septic Density
-  Criteria 7 - Pollution Load Hotspots
-  Criteria 13 - Detention Basin

  
**STORMWATER MANAGEMENT COMMISSION**  
 This map is provided for general locational information only. Map features have been derived from various sources, each of which has its own scale and accuracy. The locations of all features are approximate.  
 Lake County Stormwater Management Commission  
 February 7, 2006  
 modified February 21, 2011  
  
**DATA SOURCES:**  
 Kenosha County GIS  
 Lake County Stormwater Management  
 Southeastern Wisconsin Regional Planning Commission  
 Lake County Department of Information And Technology, GIS & Mapping Division

