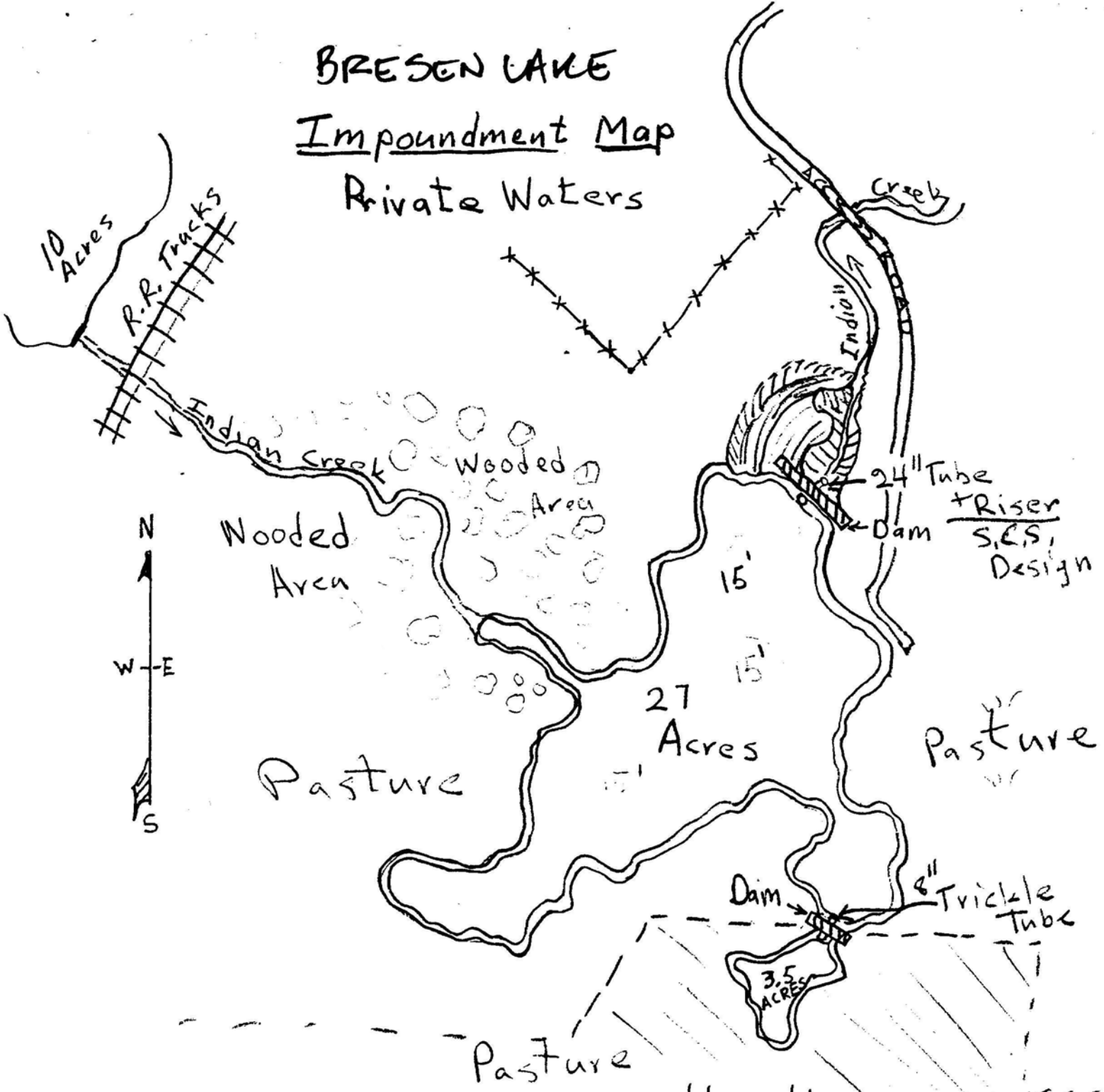


BRESEN LAKE

Impoundment Map

Private Waters



Hawthorn
Woods
Subdivision
Property

Biologist - Gregg Tichacek

County - LAKE
 Location - T-43N R-10E S-35E 1/4
 Water Name Bresen Lake
 Map Source SCS-Aerial Photos
 Date April 20, 1964
 Area 27 Acres + 3.5 Acres
 Watershed 100+ Acres
 Elevation 799 ft. Above Sea Level
 Maximum Depth 15 ft.
 Average Depth 8 ft.
 Lake Built 1963